

NVR Operation Guide

Version 1.0

OCT 2013

Content

1. Product Summary.....	3
2. Package.....	3
3. Appearance and Ports.....	3
4. Ready for Operating NVR.....	4
5. NVR Quick Operation.....	5
5.1 Network Configuration.....	5
5.2 System Configuration.....	6
5.3 Hard Disk Management.....	6
5.4 Channel Information.....	7
5.5 Monitoring Main Window.....	8
5.6 Recording Search and Playback.....	9
5.7 Other Operation.....	9
5.7.1 User Management.....	9
5.7.2 Version Upgrade.....	9
5.7.3 Recording Backup.....	10
6. Visiting NVR by IE Browser.....	10
7. NVR Basic Parameters.....	11

1. Product Summary

Our NVR is a network video recorder capable of recording video from up to 4 HD IP cameras.

The main features for the NVR are as below:

- 1) Compatible with our M series IP camera, to search the IP Cameras, to control their PTZ and other functions;
- 2) With embedded operation system, low power consumption chip for long time operating stably;
- 3) Support 4 channel 720P recording, support to view video real time and recorded video playback;
- 4) Support recording audio and talking;
- 5) Support maximum 2TB hard disk;
- 6) Built in WEB SERVER, easy to view video and configure NVR by IE browser.

2. Package

- NVR(not include hard disk) * 1
- 12V DC power adapter * 1
- USB mouse* 1
- Installation accessory*1
- Quick operation guide*1

3. Appearance and Ports



There are one red, two green status LEDs at front panel. The red LED is the power indicator, it is always on when the device power on; the green LED in the middle is hard disk indicator; it is always on when the device is recording; the green LED on right is

network indicator, it blinks when the device is transmitting data.



- 1) DC 12V power
- 2) Power switch
- 3) USB ports for USB mouse and USB disk
- 4) RJ45 network port, connect NVR to Internet by network cable
- 5) VGA video port, used for connecting with VGA monitor
- 6) Audio In/Out port, the audio output is for external speaker connection to play audio from IP camera; audio input is for external Microphone connection to talk with IP camera;
- 7) BNC video port, for connecting to monitor

4. Ready for Operating NVR

You need to do the following before you use the NVR.

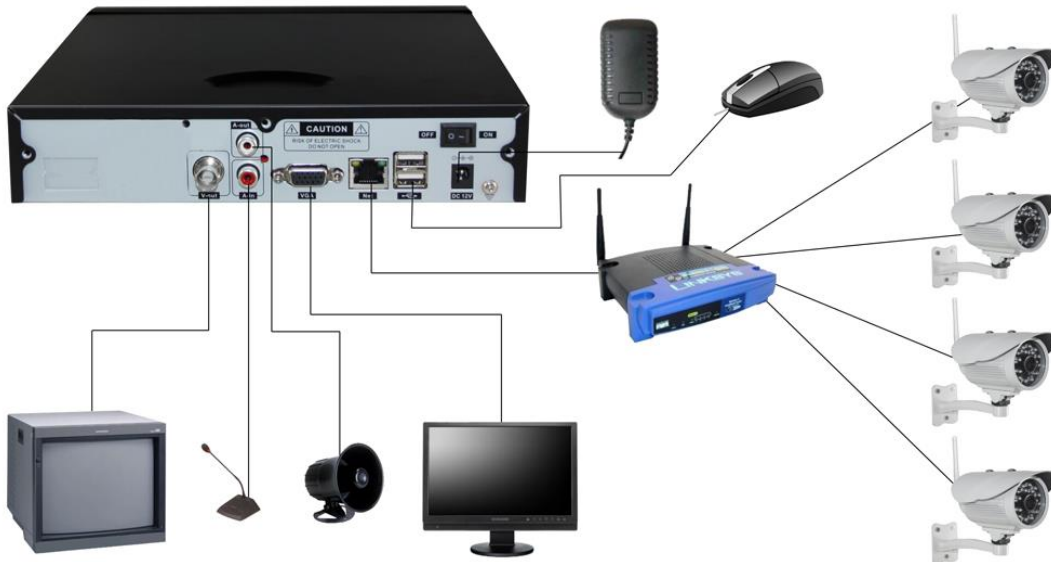
- 1) Buy a hard disk with SATA port, Maximum 2TB;
- 2) Install the hard disk: open the NVR top cover; connect the data and power cable of the NVR to hard disk, and then fix the hard disk to bottom cover with screws, and then fix the top cover.



- 3) Connect the NVR to Internet by cable, and ensure you have connected the M

series IP camera to the internet. Typical connection mode is as below.

- 4) Connect the NVR and monitor via VGA or BNC video port, also connect USB mouse to the NVR. Insert the DC adapter and switch on power, the NVR will run normally. Power on the monitor, it will display all the information of NVR. (The NVR is similar as a CPU)



5. NVR Quick Operation

You just click mouse to operate the NVR. The basic operation of the mouse is shown as below:

- Right click on monitoring window, it will pop up a right-mouse menu;
- Right clicking on pop-up dialogue will close the dialogue or return to previous page;
- Left click to select some items;
- Click soft keyboard where you need to input characters, it will pop up a soft keyboard, you can click corresponding characters to input them.

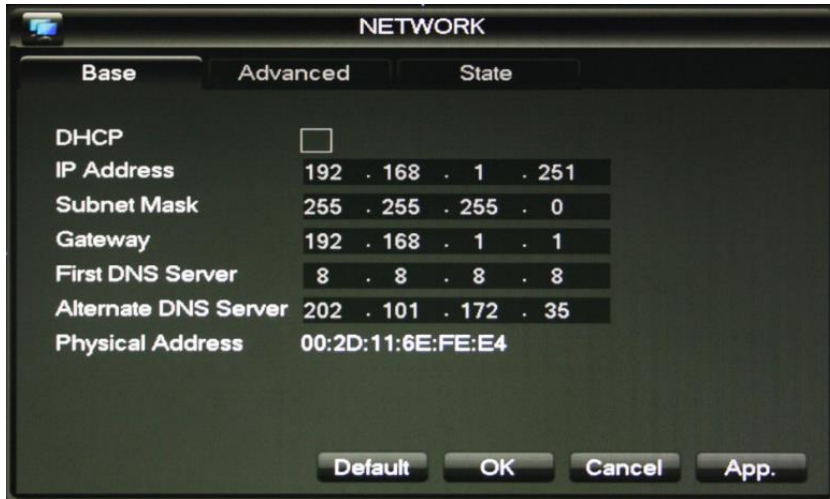
Tips: The default username for NVR is admin, default password is blank.

The NVR will show monitoring main window after it is launched normally,

Please set the NVR up according to the manual of 5.1~5.4 for video monitoring for first using.

5.1 Network Configuration

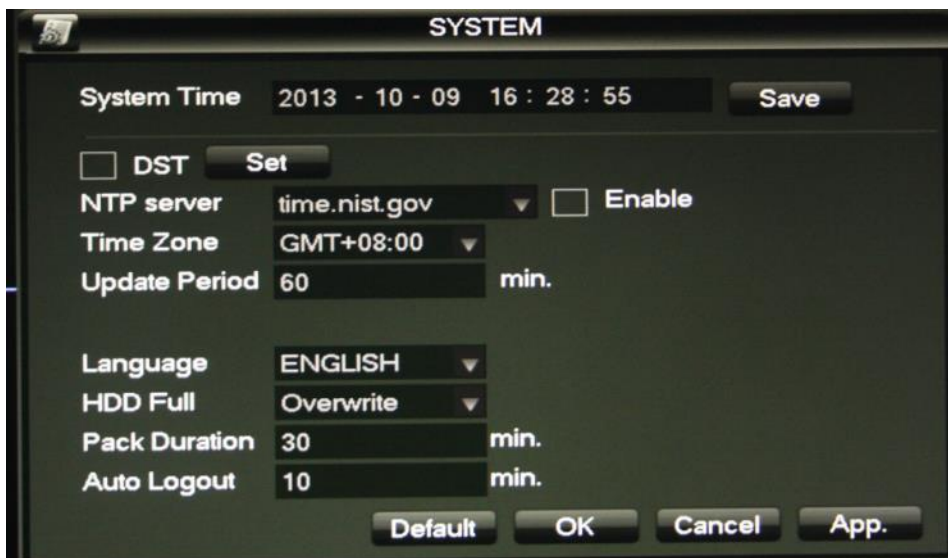
Right clicking on anywhere will pop up a menu, and then click the "MAIN MENU" to access main menu window, click "NETWORK" to do network configuration as below.



Please make sure the IP address of NVR and router are in the same network segment. You can also enable "DHCP", so the router will assign an IP address to the NVR automatically.

5.2 System Configuration

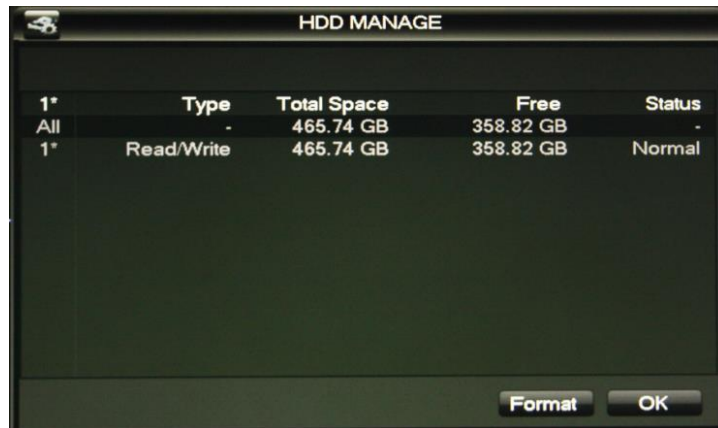
This is the System Path: MAIN MENU->MAINTAIN->SYSTEM window. Please check if the system time is correct at first. If the NVR is connected to Internet, you can launch NTP service to obtain correct time from network randomly. Otherwise you need to enter correct time manually. This time is the standard time for recording and recording search.



You change languages and do some basic settings in the window.

5.3 Hard Disk Management

Please check work status for hard disk when first using. This is the Path to check it: MAIN MENU->HDD MANAGE.



Tips: Please format hard disk for ensuring completed recording of the device when you install hard disk for the first time.

5.4 Channel Information

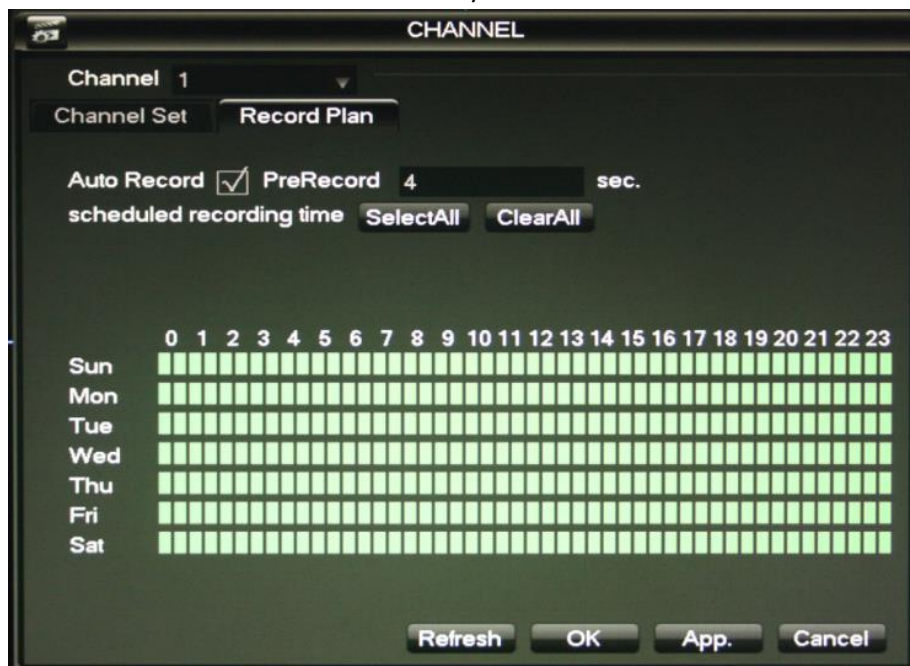
Right click on monitoring main window, it will pop up a menu, you can click “Channel” to access channel window, and also you can access “Main Menu” and choose “channel” to access channel setting window.

Each channel displays each IP camera video, so you need to fill in IP address, port, username and password of the camera in channel window as below.



The NVR supports maximum 4 channels, so please choose channel number at first when you fill

in channel information. It will send the current time to IP camera if ticked "IPC Equipment Calibration Time". Click "ON" button, the NVR will connect to the camera and play live video when all data have been filled in correctly.











Click "Record Plan" to access it, you can set up scheduled recording for some channels. Tick "Auto" to launch scheduled recording, you can click the time bar to set your recording duration, click "OK" to finish it.

5.5 Monitoring Main Window

After setting up as above steps, right clicking to return to monitoring main window, then you can view the video from IP camera.

The NVR has 4 channel pictures, double click one picture; it will zoom to full screen, double click again and return to 4 channel pictures.

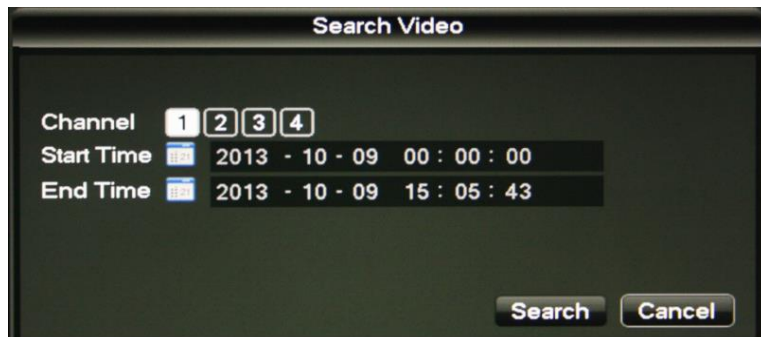
There are some icons to show the channel name and record status under each channel, the icons as below:

	scheduled recording		Launch talking
	recording manually		Lock channel icon
	Motion detection (IP camera needs to launch motion detection		Launch recording manually
	Launch audio		close recording manually

It will display PTZ control buttons when you move the mouse to the bottom right corner for each channel, click direction buttons, you can control the camera PTZ.

5.6 Recording Search and Playback

To play recording file in hard disk, path: MAIN MENU->Search recording playback interface. Click "Search" button at lower right, select the channel and recording duration as below.



Click "Search", it will list corresponding recording files, double click some recording files to play back them.



5.7 Other Operation

5.7.1 User Management

Access MAIN MENU->MAINTAIN->ACCOUNT window, and change username and password.

5.7.2 Version Upgrade

Copy the new firmware file into root directory of USB disk, and then insert it into USB port of NVR (operate it without power supply)

Right click in monitor main window, and then select "version" to access version dialogue, you can check the current version. If you need to upgrade, click "upgrade" button, it will pop up a dialogue, click "OK" to upgrade version.

5.7.3 Recording Backup

Insert USB disk into USB port for the NVR, Path: MAIN MENU->MAINTAIN>BACKUP window.

If the NVR detects USB disk, you can click "BACKUP" button, and then search desired backup file in pop up dialogue and choose it, click "START" to start recording backup.

6. Visiting NVR by IE Browser

Input IP address of NVR (see it at network window) in IE browser to access login interface, you need to download ActiveX control and install it at first. Enter username and password (default username: admin, password: blank), click "Login" to access operation window.



Click a channel, it will play corresponding live video. Click "Replay" and "Setting" button in left top corner, it will access corresponding page, their operation is the same as chapter 5.

7. NVR Basic Parameters

Video/Audio processing	Video	Support maximum 4 channels of 720P network video
	Audio	Support monitor audio and talking
Recording management	Recording mode	Manual Recording/Schedule Recording
	Backup mode	USB disk
Hard disk	Type	1 SATA port
	Max capacity	Support maximum 2TB hard disk
External port	VGA signal output	1 channel VGA port
	CVBS signal output	1 channel BNC port (Level:1.0Vp-p, Impedence:75Ω)
	Audio Input port	1 RCA port (Linear Level)
	Audio output port	1 RCA port (Linear Level)
	Network port	1 RJ45 10M/100M auto
	USB port	2 USB 2.0
Network management	Network protocol	IPv4, HTTP, NTP, UPnP, DDNS,etc
Other	Upgrade	USB disk
	Power supply	DC 12V 2A
	Power consumption (not include Hard disk)	≤6W
	Work temperature range	-10°C--+40°C
	Work humidity range	10%--90%relative, non-condensing
	Dimensions	221mm(Depth)*212mm(Width)*45mm(height)
	Weight	0.652(kg)